

FIRST NATION-OWNED



# GYM & DAYCARE

Recreational centre and childcare facility

# EXTERIOR

Active living in Indigenous and northern communities



Our products provide a superior steel constructed modular design, built with materials that will not rot, mould, or deteriorate. They are easily transported and will stand the test of time!

Why choose a sustainable **Bison Home** for your community



# INTERIOR

## Ready-to-move

- Built in our fabrication shop up to 95% complete
- Choose from our product catalog of homes and commercial buildings to suit your needs
- Transported via road or rail to anywhere in Canada



## Courts



### Multipurpose gymnasium floor

Basketball, volleyball, badminton, dodgeball, and more – the active sports and exercise options on these courts are endless!

## Locker Room



### A secure and private change room

Designated areas for both genders offer a place for visitors and teams to safely change into their gear and store all personal items.

## Nursery



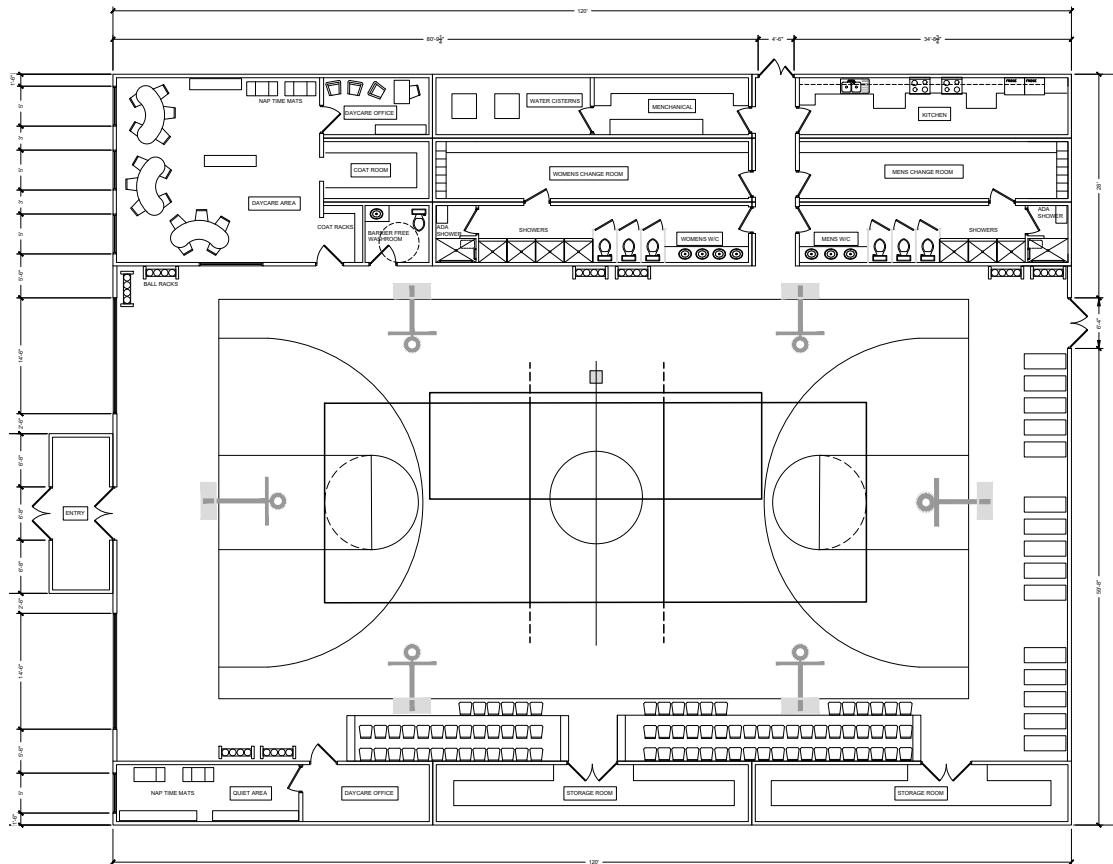
### A safe place for children

“Whether it’s for a full day or while you get some quick exercise, our centre provides a safe and fun space for your children to stay.”

# LAYOUT

## FLOOR PLAN

The Bison Gym & Daycare modular design is made up of a minimum of 13 containers for a full recreational experience with an open floor plan and multipurpose exercise options.



## Modular System

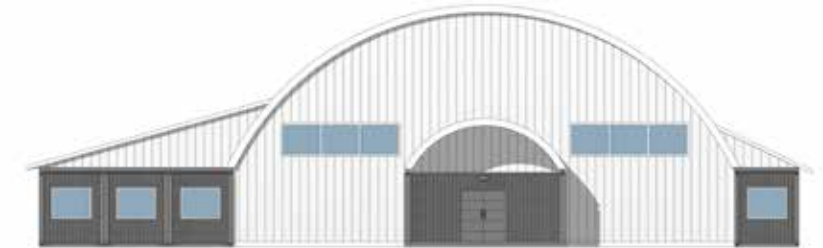
The open floor plan is built for safe and fun recreation.



## Option A

13 CONTAINERS

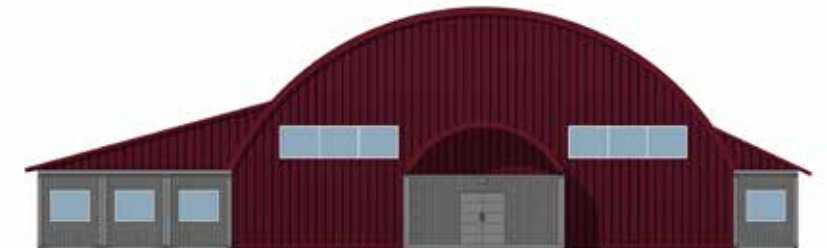
WHITE EXTERIOR FINISH



## Option B

13 CONTAINERS

CUSTOM COLOUR EXTERIOR FINISH

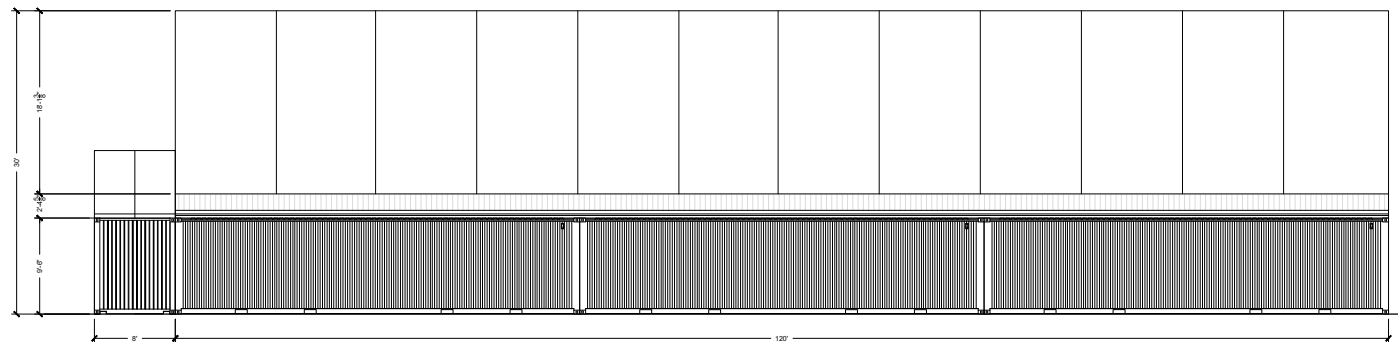
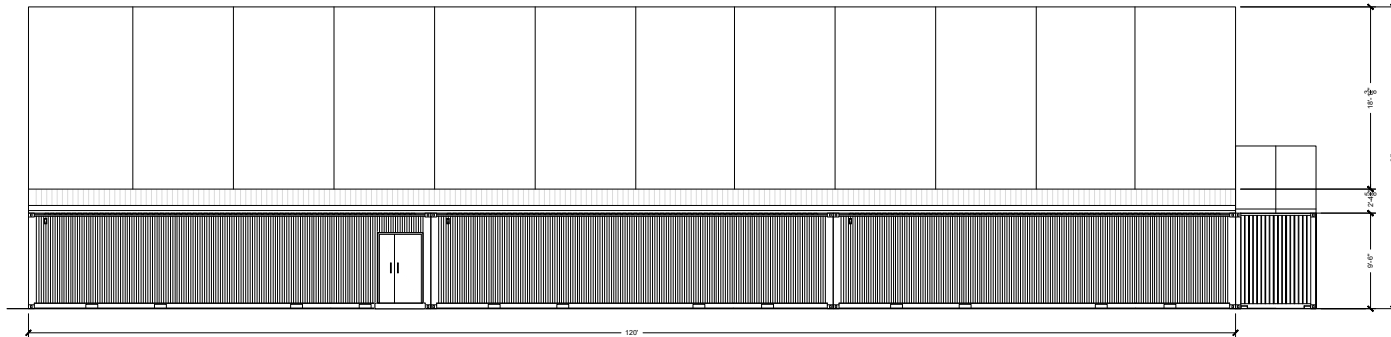


# LAYOUT

# LAYOUT

## EXTERIOR ELEVATIONS

When more space is needed, we can add them to the end of the building.



# SPECIFICATIONS

## STABILITY

### Foundation and structure

- Fully welded 8" structural steel channel
- Steel foundation welded to container shell
- Recycled shipping container that has been air tested for quality
- Structural steel supports for windows and doors
- Structural steel channel supports for large openings

### Insulation

- Floor cavity R44 Rockwool insulation
- Exterior walls R24 closed cell spray foam
- Ceiling R70 combination of closed cell spray foam and Rockwool insulation

## EXTERIOR

### Framing

- Combination of wood and steel stud framing for walls, floor and ceiling

### Finish

- Combination of Industrial painted container siding metal siding
- Vinyl triple pane casement windows with a layer of Lexan glass on outside
- Doors completed with insulated steel
- Gym structure supplied and installed by Cobra Structures
- Fabric tension building with a hot-dip galvanized steel structure

## INTERIOR

### Finish

- Walls commercial grade vinyl wrapped 1/2" drywall
- Ceiling Tong and groove pine 1" x 6"
- Flooring Vinyl plank
- Baseboard trim commercial vinyl
- Door frames commercial steel with hollow core door panels

### Millwork

- Kitchen cabinets boxes 3/4" plywood construction
- Option of Oak shaker doors or Melamine flat panel doors
- Hardware all slow close and 180 degree swing door hinges
- Counter tops flowform laminate

### Plumbing

- Hytec One piece shower stall
- Delta Fixtures
- Pex water lines
- PVC sanitation lines, PVC water cistern

### HVAC

- PTAC heat pump with air conditioning
- Resistant electric back up in bedrooms
- HRV supplying fresh air

### Electrical

- Over head or under ground service connection

## PARTNERS



## SOCIAL MEDIA



@bisoncontainers



Bison Container Homes



@bisoncontainers



Bison Container Homes



*Clint Gower completing  
electrical work in a  
Bison Container Home*



## Contact Information

Phone: 204-800-8099  
Toll-free: 1-866-473-1635  
info@cobraenterprises.ca

60 IXL Crescent  
East Selkirk, Manitoba R1A 2A8  
www.cobrastructures.ca